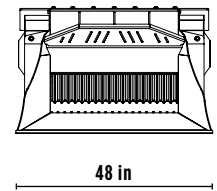
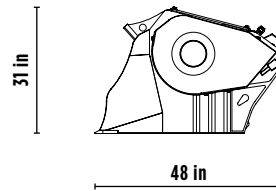
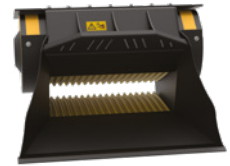
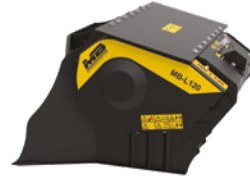


# MB-L120 S2



## ACCESSORIES

- RECOMMENDED SPARE PARTS KIT
- FIXED COUPLING
- HOUR METER
- DUST SUPPRESSION KIT
- 24 MONTHS WARRANTY



## SPECIFICATIONS

<b>EQUIPMENT</b>	$\geq 6,600 \leq 26,500$ lb
<b>LOAD CAPACITY</b>	0.25 cy
<b>OPENING DIMENSIONS</b>	W 29 H 10 in
<b>OUTPUT SETTING</b>	$\geq 0.5 \leq 2.5$ in
<b>DIMENSIONS</b>	48" x 48" x 31" H in
<b>OIL FLOW</b>	25 gal/min
<b>PRESSURE</b>	> 2,900 PSI
<b>COUNTER PRESSURE</b>	< 146 PSI
<b>WEIGHT</b>	2,095 lbs

## AREAS OF APPLICATION



RECYCLING



SMALL URBAN WORKSITES



ROAD WORKS



SMALL DEMOLITION SITES

The data provided above is not binding, as the manufacturer reserves itself the right to make improvements to its products at any time and with no advance notice. References to excavator weights are approximate and many may be subject to changes.